

## Weekly MOTR Chart Pack (WMCP)

June 30th, 2025

In this week's **WMCP** we wanted to highlight the semi's group because it has made an impressive jump from the bottom of our **MOTR Group Ranks** to now the #15 spot. With the majority of semi stocks still below their 2021 peak, we are focusing here on those that are above that level. While some of the names we feature are a bit extended, we would be buyers into short-term supports (see table below and accompanying charts for specific levels).

Pg#	Sym	Name	Sec	Rank	Industry	Rank	MO Score	Mkt Cap (Bn.)	Last	Trend Stage (LT)	Resistance Zone	Support Zone	Trend Stage (MT)	Resistance Zone	Support Zone	Trend Stage (ST)	Resistance Zone	Support Zone	Setups	Tactics	Breakouts	W	FQ	VA							
2	ATEYY	Advantest Corporation	IT	4	Semiconductor Equip	74	5	\$53.5	\$74.14	Up Trend4	\$65.40	\$61.82	\$34.23	\$32.44	Up Trend2	\$57.63	\$55.25	\$34.98	\$33.78	Up Trend2	\$74.24	\$72.50	\$57.72	\$56.85				11	W	1	88
3	AVGO	Broadcom Inc.	IT	4	Semiconductor Design	49	6	\$1,266.9	\$269.35	Up Trend4	\$251.88	\$237.81	\$125.57	\$118.53	Up Trend2	\$244.55	\$234.31	\$147.26	\$142.14	Up Trend2	\$271.85	\$267.90	\$236.13	\$234.15				1	W	5	98
4	NVMI	Nova Ltd.	IT	4	Semiconductor Equip	74	12	\$7.9	\$267.64	Up Base+	\$285.77	\$269.81	\$134.22	\$126.24	Up Trend3	\$245.36	\$235.49	\$151.54	\$146.60	Up Trend2	\$263.96	\$258.57	\$212.78	\$210.09				1	W	2	88
5	MTSI	MACOM Technology Solutions	IT	4	Semiconductor Design	49	17	\$10.6	\$142.05	Up Base+	\$152.50	\$144.68	\$80.98	\$77.07	Up Trend2	\$130.27	\$125.55	\$86.36	\$84.00	Up Trend2	\$142.50	\$140.90	\$127.29	\$126.49				1	W	55	96
6	LRCX	Lam Research Corporation	IT	4	Semiconductor Equip	74	17	\$124.3	\$97.20	Up Base+	\$104.75	\$100.00	\$59.58	\$57.20	Up Trend2	\$88.46	\$85.53	\$70.34	\$68.87	Up Trend2	\$98.02	\$96.59	\$85.49	\$84.77				1	W	1	83
7	KLAC	KLA Corporation	IT	4	Semiconductor Equip	74	18	\$117.7	\$889.87	Up Base+	\$896.32	\$857.51	\$547.24	\$527.83	Up Trend3	\$810.61	\$784.69	\$581.91	\$568.95	Up Trend2	\$914.83	\$900.91	\$803.64	\$796.68				1	W	1	88
8	TSM	Taiwan Semiconductor Manufacturing	IT	4	Semiconductor Mfg	61	18	\$962.9	\$228.57	Up Trend4	\$226.40	\$215.74	\$133.54	\$128.20	Up Trend4	\$205.25	\$198.58	\$141.83	\$138.50	Up Trend2	\$228.88	\$225.81	\$201.01	\$199.48				111	W	1	73
9	NVDA	NVIDIA Corporation	IT	4	Semiconductor Design	49	22	\$3,849.1	\$157.75	Up Trend4	\$153.13	\$144.55	\$85.37	\$81.08	Up Trend4	\$143.49	\$137.56	\$88.38	\$85.42	Up Trend2	\$157.05	\$154.95	\$137.11	\$136.07				11	W	1	98
10	ARM	Arm Holdings plc	IT	4	Semiconductor Design	49	25	\$174.8	\$165.46	Up Base+	\$205.56	\$191.78	\$74.68	\$67.79	Up Trend2	\$148.19	\$141.40	\$83.75	\$80.36	Up Trend2	\$166.36	\$162.99	\$131.53	\$129.84				11	W	11	100

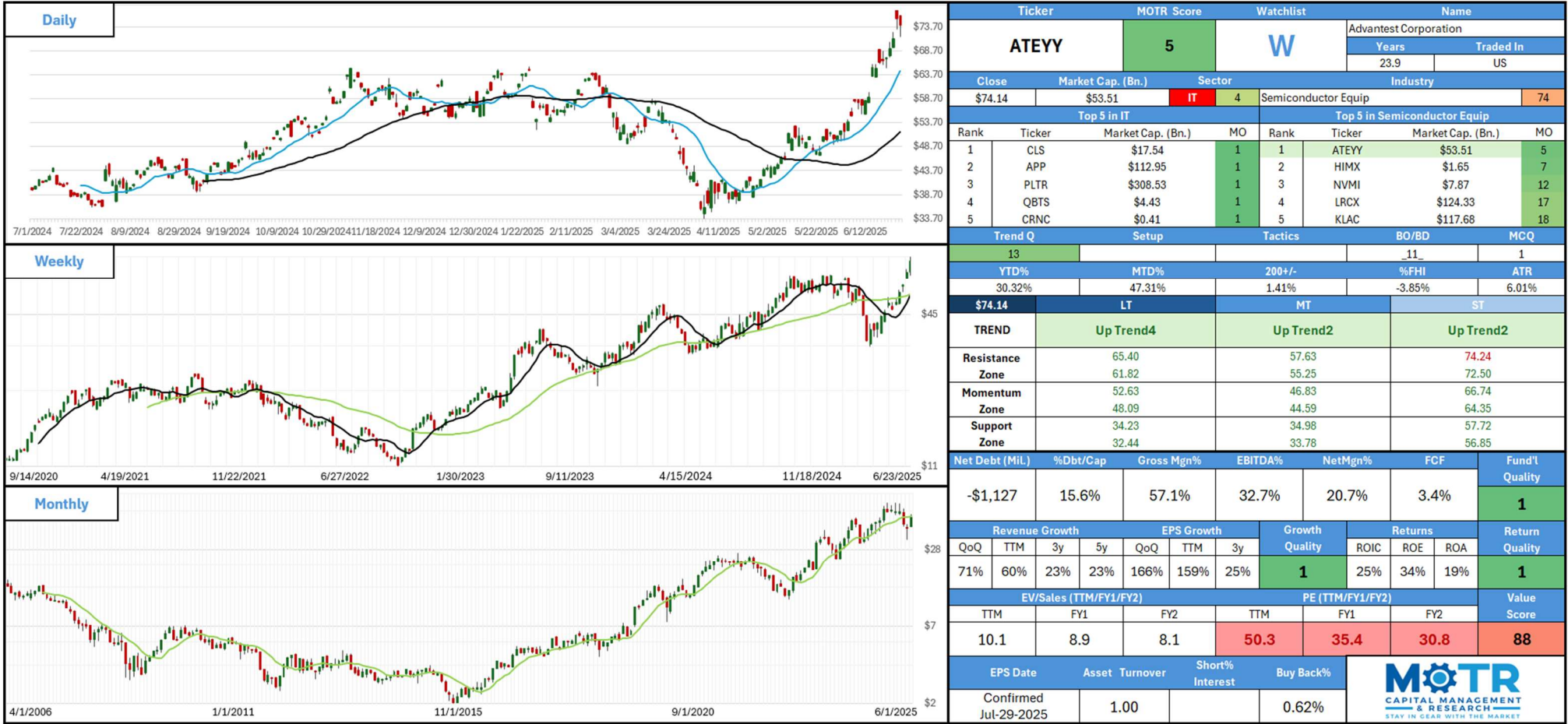
Additionally, we feature a few long-term base breakouts outside of the semiconductor industry group.

Pg#	Sym	Name	Sec	Rank	Industry	Rank	MO Score	Mkt Cap (Bn.)	Last	Trend Stage (LT)	Resistance Zone	Support Zone	Trend Stage (MT)	Resistance Zone	Support Zone	Trend Stage (ST)	Resistance Zone	Support Zone	Setups	Tactics	Breakouts	W	FQ	VA						
11	TPR	Tapestry Inc.	CD	9	Apparel-Clothing Mfg	90	3	\$18.1	\$87.11	Up Trend3	\$90.85	\$87.01	\$41.75	\$39.83	Up Trend3	\$84.88	\$81.81	\$59.84	\$58.31	Up Trend2	\$87.86	\$86.82	\$78.44	\$77.93			1_1	W	16	59
12	BBIO	BridgeBio Pharma Inc.	HC	11	Biotechnology	95	4	\$8.5	\$44.86	Up Trend4	\$39.47	\$37.23	\$19.06	\$17.94	Up Trend2	\$39.54	\$37.85	\$27.35	\$26.51	Up Trend2	\$44.88	\$44.20	\$38.50	\$38.17	DOUBT		_11	W	91	99
13	FROG	JFrog Ltd.	IT	4	Software-Enterprise	45	10	\$5.0	\$43.91	Up Base+	\$48.81	\$46.29	\$20.43	\$19.17	Up Trend2	\$43.22	\$41.58	\$27.64	\$26.82	Up Base+	\$44.10	\$43.43	\$38.74	\$38.41	DOUBT		___	W	71	91
14	DIS	The Walt Disney Compan	CM	1	Media-Diversified	5	16	\$219.9	\$122.34	Up Trend1	\$118.63	\$113.91	\$80.36	\$78.00	Up Trend2	\$117.82	\$114.16	\$85.74	\$83.91	Up Trend2	\$122.94	\$121.75	\$113.28	\$112.68	DOUBT		_11	W	34	58
15	BYD	Boyd Gaming Corporation	CD	9	Recreation-Gambling	24	18	\$6.4	\$79.02	Up Trend2	\$80.50	\$77.58	\$54.09	\$52.63	On Base+	\$79.13	\$77.25	\$59.88	\$58.94	Up Trend2	\$79.04	\$78.34	\$72.68	\$72.34			_1	W	20	36

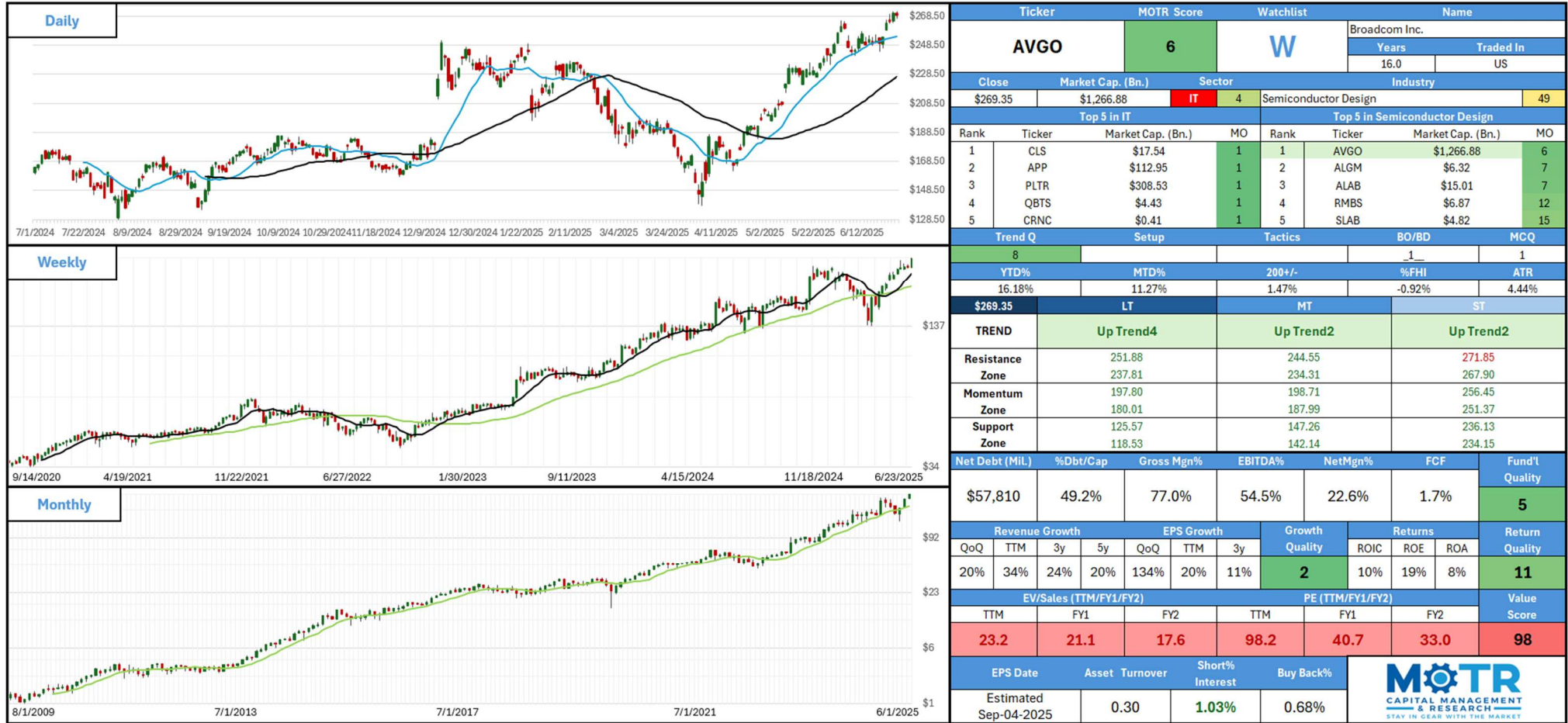
Be sure to visit the new **MOTR Owner's Manual (MOM)** located under the "About" tab on our website for more detailed explanations of the above models and more!

\*Please see the end of the **WMCP** for a detailed explanation of all the labels included in this summary and on the following charts

**PLEASE SEE IMPORTANT DISCLOSURES ON THE LAST PAGE.**



Advantest Corp is a Japan-based company mainly engaged in the manufacture and sale of semiconductor and component test system product lines and mechatronics-related product lines, as well as other related research and development, maintenance and service activities. The Company consists of three business segments. The Semiconductor and Component Test Systems Business segment provides test system products such as System on Chip (SoC) test systems and memory test systems for the semiconductor and electronic component industries. The Mechatronics-related Business segment provides test handlers for mechatronics-applied products that handle semiconductor devices, device interfaces that interface with the device under test, and nanotechnology-related products. The Services and Others segment provides comprehensive customer solutions, solutions for system-level testing of solid state drive (SSD) and other devices, support services, used equipment sales, and equipment leasing.



Broadcom Inc. is a global technology firm that designs, develops, and supplies a range of semiconductors, enterprise software and security solutions. The Company operates through two segments: semiconductor solutions and infrastructure software. Its semiconductor solutions segment includes all of its product lines and intellectual property (IP) licensing. It provides a variety of radio frequency semiconductor devices, wireless connectivity solutions, custom touch controllers, and inductive charging solutions for mobile applications. Its infrastructure software segment includes its private and hybrid cloud, application development and delivery, software-defined edge, application networking and security, mainframe, distributed and cybersecurity solutions, and its FC SAN business. It provides a portfolio of software solutions that enable customers to plan, develop, automate, manage and secure applications across mainframe, distributed, mobile and cloud platforms.

www.MOTRCMR.com

Source: MOTR Capital Management & Research Inc.; Koyfin.com

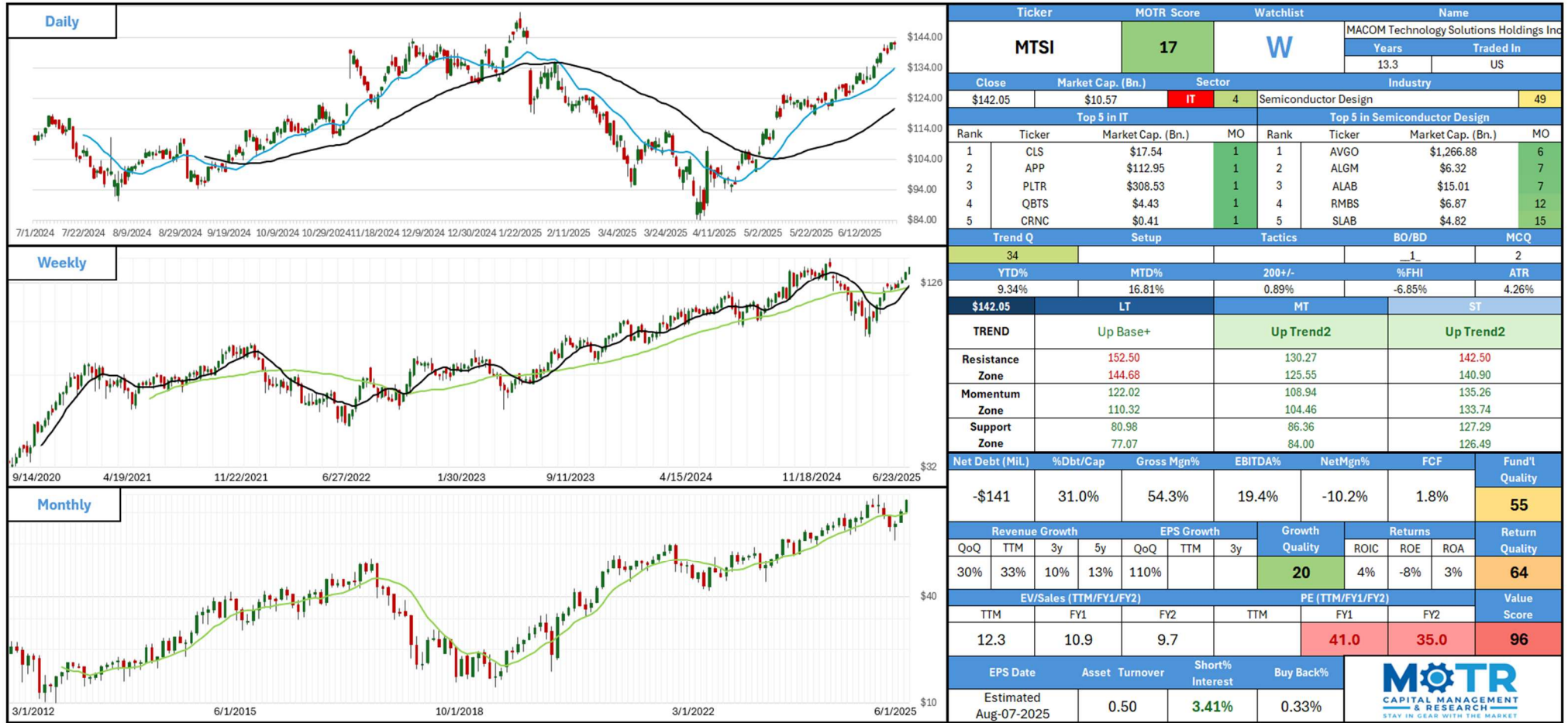




Ticker		MOTR Score		Watchlist		Name	
NVMI		12		W		Nova Ltd.	
Close		Market Cap. (Bn.)		Sector		Industry	
\$267.64		\$7.87		IT		Semiconductor Equip	
Years		Traded In		25+		US	
Top 5 in IT		Top 5 in Semiconductor Equip		Rank		Rank	
1		1		1		1	
2		2		2		2	
3		3		3		3	
4		4		4		4	
5		5		5		5	
Trend Q		Setup		Tactics		BO/BD	
15		1		2		2	
YTD%		MTD%		200+/-		%FHI	
35.89%		25.29%		0.66%		-7.68%	
\$267.64		LT		MT		ST	
TREND		Up Base+		Up Trend3		Up Trend2	
Resistance		285.77		245.36		263.96	
Zone		269.81		235.49		258.57	
Momentum		217.21		200.14		241.28	
Zone		194.80		191.82		232.77	
Support		134.22		151.54		212.78	
Zone		126.24		146.60		210.09	
Net Debt (Mil.)		%Dbt/Cap		Gross Mgn%		EBITDA%	
-566		19.4%		57.5%		31.3%	
Revenue Growth		EPS Growth		Growth Quality		Returns	
QoQ		TTM		3y		5y	
50%		41%		17%		27%	
77%		53%		23%		12%	
EV/Sales (TTM/FY1/FY2)		PE (TTM/FY1/FY2)		Value Score		Return Quality	
TTM		FY1		FY2		TTM	
9.8		8.5		7.9		40.4	
EPS Date		Asset Turnover		Short% Interest		Buy Back%	
Estimated Aug-07-2025		0.60		5.44%		0.63%	

Nova Ltd, former Nova Measuring Instruments Ltd, is an Israel based company which provides metrology solutions for the semiconductor manufacturing industry. The Company offers in-line Optical and x-ray stand-alone metrology systems, as well as integrated optical metrology systems, which are attached directly to wafer fabrication process equipment. Its metrology systems measure various film thickness and composition properties, as well as critical-dimension (CD) variables during various front-end and back-end of line steps in the semiconductor wafer fabrication process. Its product portfolio includes a set of in-situ, integrated and stand-alone metrology platforms suited for dimensional, films and material metrology measurements for process control across multiple semiconductor manufacturing process steps. Its products include NovaScan 2040, NovaScan 3090Next, Nova i500, Nova T500, Nova T600, Nova V2600 TSV metrology system among others.





MACOM Technology Solutions Holdings, Inc. designs and manufactures high-performance semiconductor products for the industrial and defense, data center and telecommunications industries. It services over 6,000 customers annually with a product portfolio that incorporates radio frequency (RF), microwave, analog and mixed signal and optical semiconductor technologies. The Company is specialized in application, analog and mixed signal circuit design, compound semiconductor fabrication (including gallium arsenide (GaAs), gallium nitride (GaN), indium phosphide (InP) and specialized silicon), advanced packaging and back-end assembly and test. It offers a broad portfolio of standard and custom devices, which include integrated circuits (IC), multi-chip modules (MCM), diodes, amplifiers, switches and switch limiters, passive and active components and RF and optical subsystems. Its products are electronic components that its customers generally incorporate into larger electronic systems.

www.MOTRCMR.com

Source: MOTR Capital Management & Research Inc.; Koyfin.com



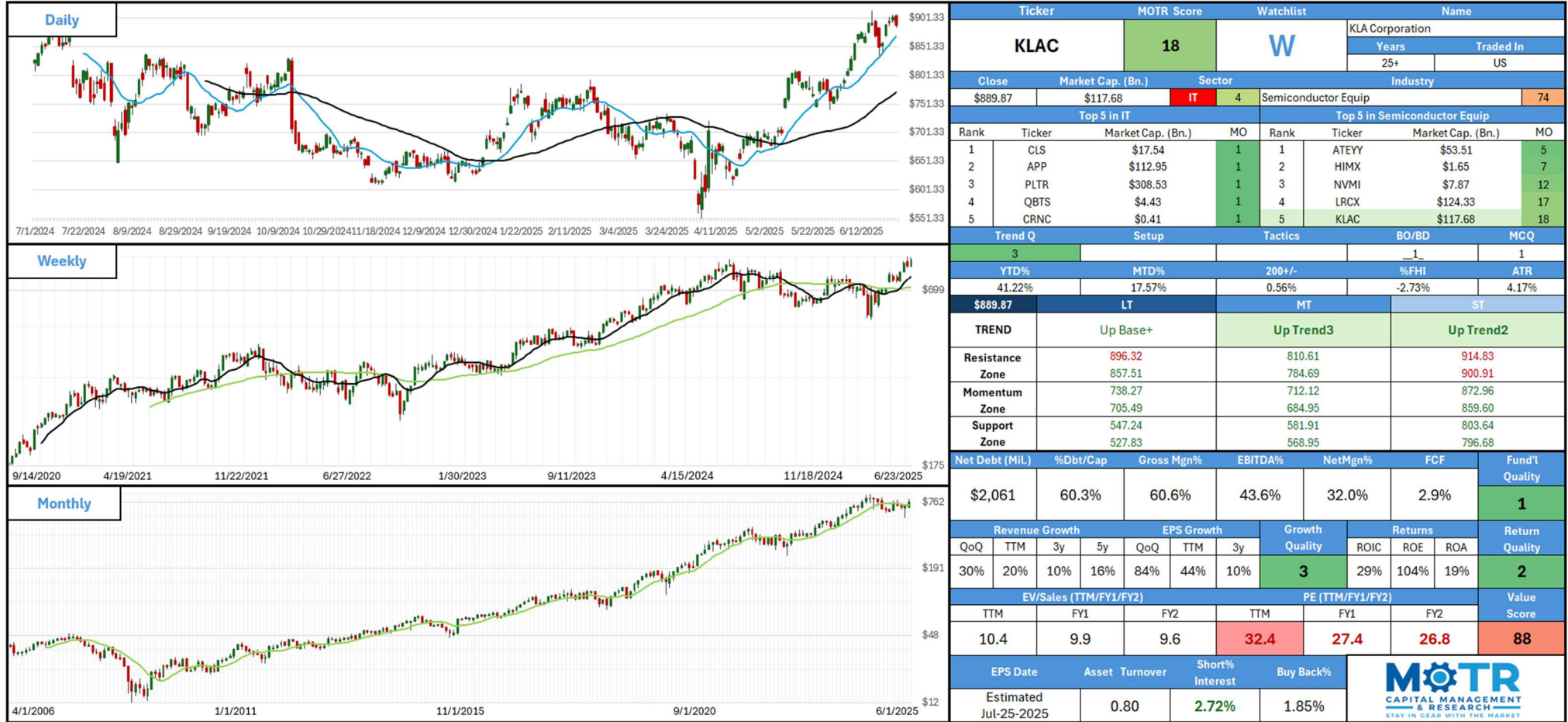
Ticker		MOTR Score		Watchlist		Name	
LRCX		17	W	Lam Research Corporation			
				Years		Traded In	
				25+		US	
Close		Market Cap. (Bn.)		Sector		Industry	
\$97.20		\$124.33		IT	4	Semiconductor Equip	
						74	
Top 5 in IT				Top 5 in Semiconductor Equip			
Rank	Ticker	Market Cap. (Bn.)		MO	Rank	Ticker	Market Cap. (Bn.)
1	CLS	\$17.54		1	1	ATEYY	\$53.51
2	APP	\$112.95		1	2	HIMX	\$1.65
3	PLTR	\$308.53		1	3	NVMI	\$7.87
4	QBTS	\$4.43		1	4	LRCX	\$124.33
5	CRNC	\$0.41		1	5	KLAC	\$117.68
Trend Q		Setup		Tactics		BO/BD	
11						1	
YTD%		MTD%		200+/-		%FHI	
34.57%		20.31%		0.66%		-13.98%	
						ATR	
						4.30%	
\$97.20		LT		MT		ST	
TREND		Up Base+		Up Trend2		Up Trend2	
Resistance		104.75		88.46		98.02	
Zone		100.00		85.53		96.59	
Momentum		83.10		75.28		92.69	
Zone		78.85		72.31		91.15	
Support		59.58		70.34		85.49	
Zone		57.20		68.87		84.77	
Net Debt (MIL)		%Dbt/Cap		Gross Mgn%		EBITDA%	
-\$966		32.0%		48.1%		33.1%	
						27.2%	
						3.1%	
						1	
Revenue Growth				EPS Growth		Growth Quality	
QoQ		TTM		3y		5y	
24%		20%		1%		12%	
		41%		32%		4%	
						7	
						24%	
						53%	
						17%	
						2	
EV/Sales (TTM/FY1/FY2)				PE (TTM/FY1/FY2)			
TTM		FY1		FY2		TTM	
7.2		6.8		6.6		27.1	
						24.2	
						24.1	
						83	
EPS Date		Asset Turnover		Short% Interest		Buy Back%	
Estimated Jul-31-2025		0.90		1.95%		1.91%	
<div><div>MOTR</div><div>CAPITAL MANAGEMENT &amp; RESEARCH</div><div>STAY IN GEAR WITH THE MARKET</div></div>							

Lam Research Corporation is a global supplier of wafer fabrication equipment and services to the semiconductor industry. The Company designs, manufactures, markets, refurbishes, and services semiconductor processing equipment used in the fabrication of integrated circuits. Its products and services are designed to help its customers build devices that are used in a variety of electronic products, including mobile phones, personal computers, servers, wearables, automotive vehicles, and data storage devices. Its product families include ALTUS, SABRE, SPEED, Striker, VECTOR, Flex, Vantex, Kiyo, Versys Metal, Syndion, Coronus, and DV-Prime, Da Vinci, EOS, and SP Series. Its customer base includes semiconductor memory, foundries, and integrated device manufacturers that make products such as non-volatile memory, dynamic random-access memory, and logic devices. It offers services in areas, such as nanoscale applications enablement, chemistry, plasma and fluidics, and others.

www.MOTRCMR.com

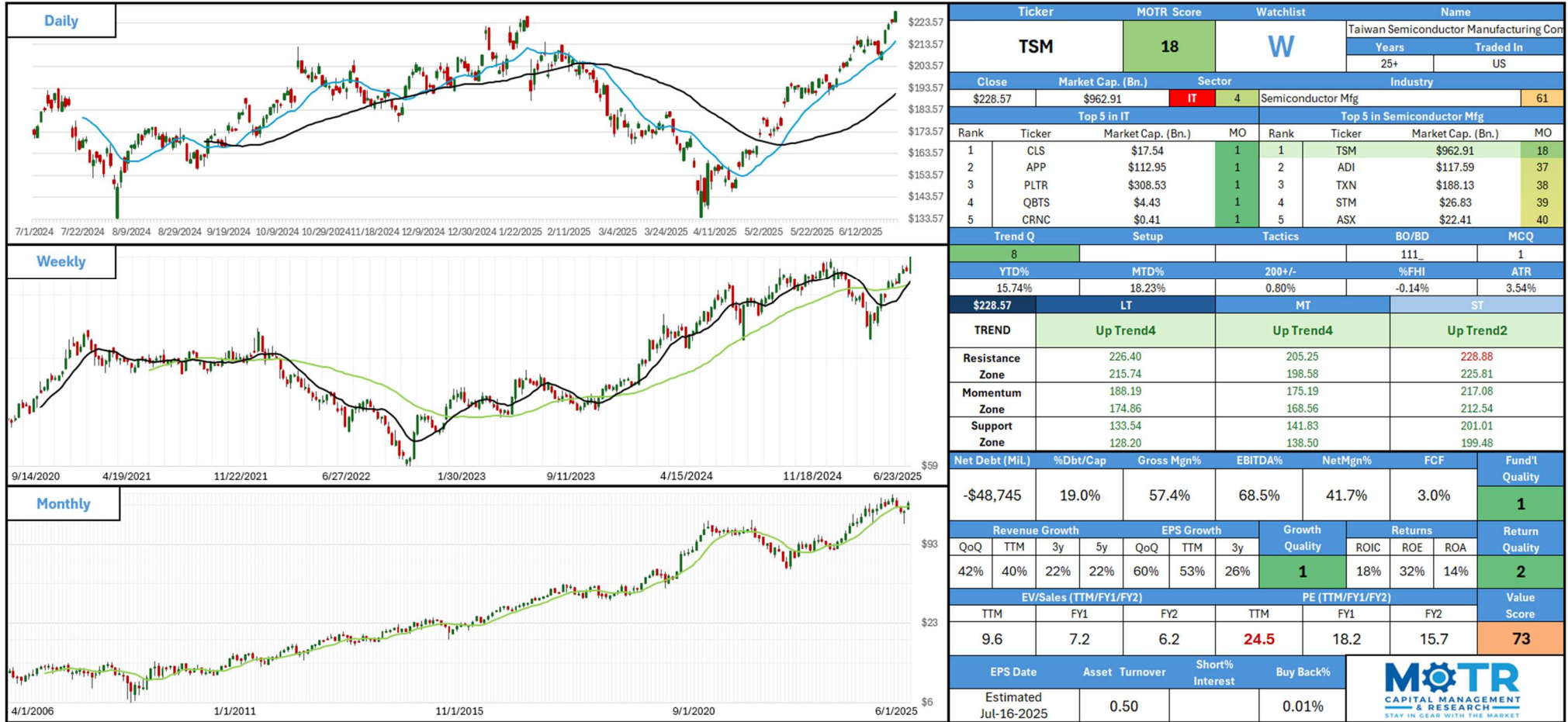
Source: MOTR Capital Management & Research Inc.; Koyfin.com



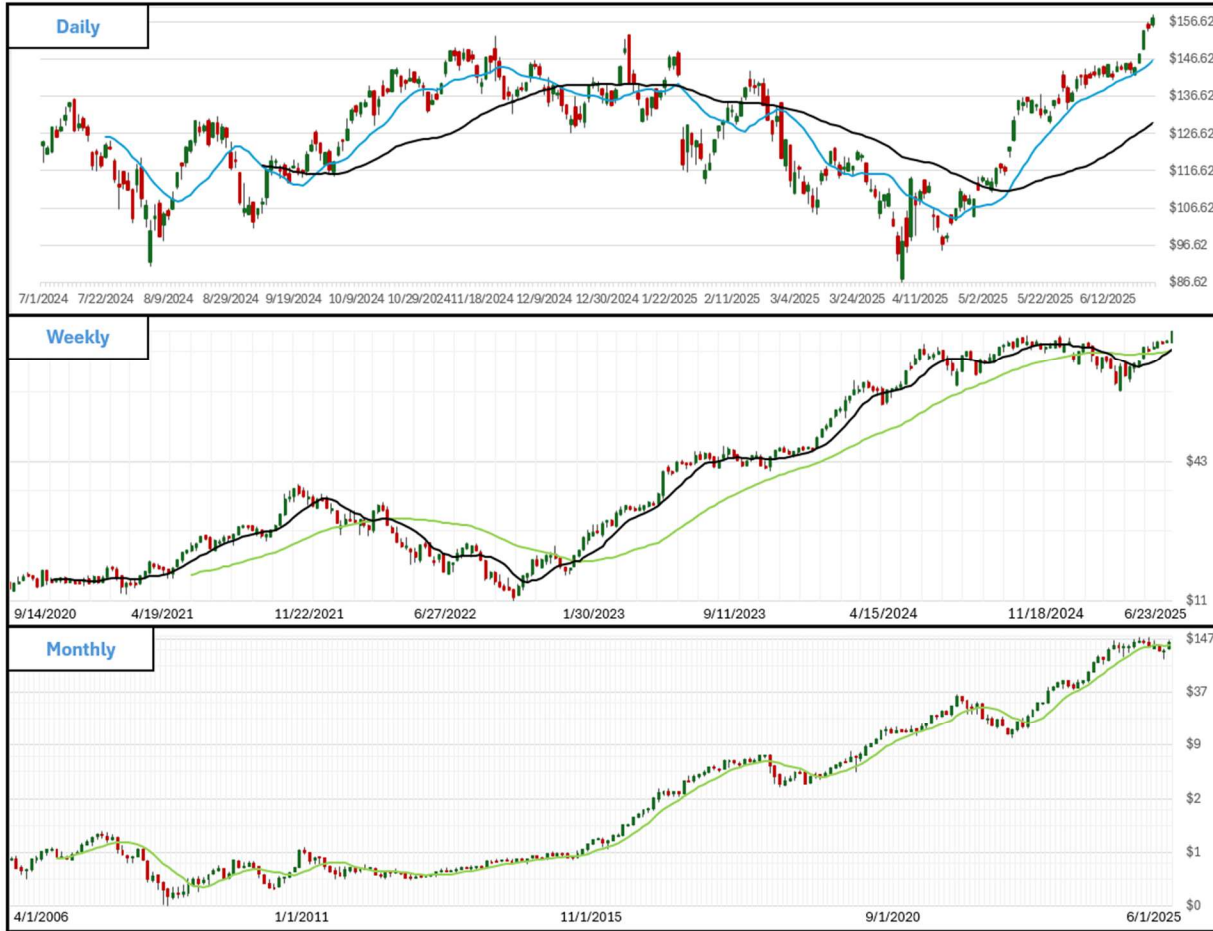


KLA Corporation is a supplier of process control and yield management solutions and services for the semiconductor and related electronics industries. The Company offers a portfolio of inspection and metrology products, and related services, software and other offerings, supports research and development (R&D) and manufacturing of integrated circuits (ICs), wafers and reticles. Its segments include Semiconductor Process Control, Specialty Semiconductor Process, and PCB and Component Inspection. Semiconductor Process Control segment provides comprehensive portfolio of inspection, metrology and software products, as well as related services, helping IC, wafer, reticle/mask and chemical/materials manufacturers achieve target yields throughout the entire fabrication process, from R&D to final volume production. The Specialty Semiconductor Process segment develops and sells advanced vacuum deposition and etch process tools, which are used by a range of specialty semiconductor customers.





Taiwan Semiconductor Manufacturing Co Ltd is a Taiwan-based company mainly engaged in the provision of integrated circuit manufacturing services. The integrated circuit manufacturing services include process technology, special process technology, design ecosystem support, mask technology, 3DFabric™ advanced packaging and silicon stacking technology services. The Company has completed the transfer and mass production of 5nm technology, and is engaged in the research and development of 3nm process technology and 2nm process technology. The product application range covers the entire electronic application industry, including personal computers and peripheral products, information application products, wired and wireless communication system products, servers and data centers.



Ticker	MOTR Score	Watchlist	Name	
<b>NVDA</b>	<b>22</b>	<b>W</b>	NVIDIA Corporation	
Close		Market Cap. (Bn.)	Sector	Industry
\$157.75		\$3,849.10	IT	Semiconductor Design
YTD%		MTD%	200+/-	%FHI
17.47%		16.74%	0.89%	-0.60%
Trend Q		Setup	Tactics	BO/BD
20				11
YTD%		MTD%	200+/-	%FHI
17.47%		16.74%	0.89%	-0.60%
\$157.75		LT	MT	ST
TREND		Up Trend4	Up Trend4	Up Trend2
Resistance		153.13	143.49	157.05
Zone		144.55	137.56	154.95
Momentum		128.92	118.55	148.23
Zone		119.03	111.63	144.89
Support		85.37	88.38	137.11
Zone		81.08	85.42	136.07
Net Debt (Mil.)	%Ddt/Cap	Gross Mgn%	EBITDA%	NetMgn%
-\$43,406	10.9%	70.1%	59.4%	51.7%
Revenue Growth		EPS Growth	Growth Quality	Returns
QoQ	TTM	3y	5y	QoQ
69%	86%	71%	66%	27%
EV/Sales (TTM/FY1/FY2)		PE (TTM/FY1/FY2)	Value Score	
TTM	FY1	FY2	TTM	FY1
25.6	19.1	15.2	50.9	36.8
EPS Date		Asset Turnover	Short% Interest	Buy Back%
Confirmed Aug-27-2025		1.50	0.94%	1.20%

NVIDIA Corporation is a full-stack computing infrastructure company. The Company is engaged in accelerated computing to help solve the challenging computational problems. The Company's segments include Compute & Networking and Graphics. The Compute & Networking segment includes its Data Center accelerated computing platforms and artificial intelligence (AI) solutions and software; networking; automotive platforms and autonomous and electric vehicle solutions; Jetson for robotics and other embedded platforms, and DGX Cloud computing services. The Graphics segment includes GeForce GPUs for gaming and PCs, the GeForce NOW game streaming service and related infrastructure, and solutions for gaming platforms; Quadro/NVIDIA RTX GPUs for enterprise workstation graphics; virtual GPU software for cloud-based visual and virtual computing; automotive platforms for infotainment systems, and Omniverse Enterprise software for building and operating industrial AI and digital twin applications.



Ticker	MOTR Score	Watchlist	Name	
<b>ARM</b>	<b>25</b>	<b>W</b>	Arm Holdings plc	
			Years	Traded In
			1.8	US
Close	Market Cap. (Bn.)	Sector	Industry	
\$165.46	\$174.81	IT	Semiconductor Design	
		4	49	
Top 5 in IT				Top 5 in Semiconductor Design
Rank	Ticker	Market Cap. (Bn.)	MO	Rank
1	CLS	\$17.54	1	1
2	APP	\$112.95	1	2
3	PLTR	\$308.53	1	3
4	QBTS	\$4.43	1	4
5	CRNC	\$0.41	1	5
Rank	Ticker	Market Cap. (Bn.)	MO	Rank
1	AVGO	\$1,266.88	6	1
2	ALGM	\$6.32	7	2
3	ALAB	\$15.01	7	3
4	RMBS	\$6.87	12	4
5	SLAB	\$4.82	15	5
Trend Q		Setup	Tactics	BO/BD
				11
YTD%		MTD%	200+/-	%FHI
34.13%		32.86%	0.66%	-12.34%
				ATR
				5.60%
\$165.46		LT	MT	ST
TREND		Up Base+	Up Trend2	Up Trend2
Resistance		205.56	148.19	166.36
Zone		191.78	141.40	162.99
Momentum		144.83	116.72	149.08
Zone		128.52	111.82	144.33
Support		74.68	83.75	131.53
Zone		67.79	80.36	129.84
Net Debt (Mil.)	%Dtb/Cap	Gross Mgn%	EBITDA%	NetMgn%
-\$2,469	5.0%	97.0%	24.8%	19.8%
				FCF
				0.1%
				Fund'l Quality
				11
Revenue Growth		EPS Growth	Growth Quality	Returns
QoQ	TTM	3y	5y	QoQ
34%	24%	14%	-4%	159%
				4%
				26
				8%
				13%
				6%
				12
EV/Sales (TTM/FY1/FY2)		PE (TTM/FY1/FY2)		Value Score
TTM	FY1	FY2	TTM	FY1
43.0	36.1	29.7	220.6	92.9
				69.4
				100
EPS Date		Asset Turnover	Short% Interest	Buy Back%
Estimated Jul-30-2025		0.50	1.51%	0.07%

Arm Holdings plc is engaged in operating a global computing platform. It architects, develops, and licenses IP solutions for CPUs, GPUs, NPUs and interconnect technologies, which is relied on by semiconductor companies and OEMs to develop their products. Its principal operations are the licensing, marketing, research and development of microprocessors, systems intellectual property (IP), graphics processing units, physical IP and associated systems IP, software, tools and other related services. Its primary product offerings are CPU products that address diverse performance, power, and cost requirements. Its complementary products, such as graphics processing units (GPUs) that accelerate the display of complex graphics onto a screen and can also be used for other mathematical applications, System IP, and compute platforms are also available as well as development tools and a software ecosystem to enable high-performance system-level creation for a range of devices and applications.





TICKER		MOTR Score		Watchlist		Name	
TPR		3		W		Tapestry Inc.	
						Years	Traded In
						25+	US
Close		Market Cap. (Bn.)		Sector		Industry	
\$87.11		\$18.09		CD	9	Apparel-Clothing Mfg	
Top 5 in CD				Top 5 in Apparel-Clothing Mfg			
Rank	Ticker	Market Cap. (Bn.)		MO	Rank	Ticker	Market Cap. (Bn.)
1	SGHC	\$5.59		1	1	TPR	\$18.09
2	GRPN	\$1.37		1	2	RL	\$16.74
3	TDUP	\$0.88		1	3	GIL	\$7.38
4	AS	\$21.83		1	4	GOOS	\$1.11
5	SRAD	\$8.39		1	5	LEVI	\$7.33
Trend Q		Setup		Tactics		BO/BD	MCQ
49						1 1	2
YTD%		MTD%		200+/-		%FHI	ATR
33.34%		10.90%		1.73%		-4.12%	4.13%
\$87.11		LT		MT		ST	
TREND		Up Trend3		Up Trend3		Up Trend2	
Resistance		90.85		84.88		87.86	
Zone		87.01		81.81		86.82	
Momentum		61.62		75.08		83.57	
Zone		56.47		72.19		82.65	
Support		41.75		59.84		78.44	
Zone		39.83		58.31		77.93	
Net Debt (Mil.)		%Dbt/Cap		Gross Mgn%		EBITDA%	
\$3,051		73.3%		75.1%		22.4%	
						12.5%	
						4.2%	
						Fund'l Quality	
						16	
Revenue Growth				EPS Growth			Growth Quality
QoQ	TTM	3y	5y	QoQ	TTM	3y	
7%	3%	1%	4%	58%	1%	7%	10%
				40			40%
				12			8%
EV/Sales (TTM/FY1/FY2)							PE (TTM/FY1/FY2)
TTM		FY1		FY2		TTM	FY1
FY2						FY1	FY2
3.1		3.0		3.0		23.0	17.2
							16.1
							59
EPS Date		Asset Turnover		Short% Interest		Buy Back%	
Confirmed Aug-14-2025		0.70		5.92%		10.49%	
<div><div>MOTR</div><div>CAPITAL MANAGEMENT &amp; RESEARCH GROUP STAY IN GEAR WITH THE MARKET</div></div>							

Tapestry, Inc. is a house of iconic accessories and lifestyle brands. The Company's global house of brands include Coach, kate spade new york and Stuart Weitzman. Coach brand is a global fashion house of accessories and lifestyle collections. Kate Spade New York is a global lifestyle brand that designs things for the everyday, delivering seasonal collections of handbags, ready-to-wear, jewelry, footwear, gifts, home decor and more. Its products include women's handbags, women's accessories, men's and other products. Women's accessories include small leather goods which includes mini and micro handbags, money pieces, wristlets, pouches and cosmetic cases. Men's includes bag collections, small leather goods, footwear, watches, sunglasses, and ready-to-wear items. Its products are sold to customers through its direct-to-consumer (DTC), wholesale and licensing businesses. Its DTC business includes retail and outlet stores, brand e-commerce sites as well as concession shop-in-shops.



BridgeBio Pharma, Inc. is a biopharmaceutical company. It discovers, creates, tests, and delivers transformative medicines to treat patients who suffer from genetic diseases. Its pipeline of development programs ranges from early science to advanced clinical trials, which includes Attruby, an oral small molecule near-complete transthyretin (TTR) stabilizer, for the treatment of cardiomyopathy of wild-type or variant transthyretin-mediated amyloidosis (ATTR-CM); Beyontra for the treatment of TTR Amyloidosis; Low-dose Infigratinib, an oral FGFR1-3 selective tyrosine kinase inhibitor (TKI) for the treatment of children with achondroplasia and hypochondroplasia; Encaleret, an oral small molecule antagonist of the calcium sensing receptor (CaSR) that it is developing for the treatment of Autosomal Dominant Hypocalcemia Type 1 (ADH1), and BBP-418, for the treatment of Limb Girdle Muscular Dystrophy Type 2L. It also conducting a Phase 1/2 study (CANaspire) for BBP-812 for Canavan disease.



Ticker		MOTR Score		Watchlist		Name						
FROG		10		W		JFrog Ltd.						
						Years	Traded In					
				4.8		US						
Close		Market Cap. (Bn.)		Sector		Industry						
\$43.91		\$5.03		IT		4						
Software-Enterprise				45								
Top 5 in IT				Top 5 in Software-Enterprise								
Rank	Ticker	Market Cap. (Bn.)		MO	Rank	Ticker	Market Cap. (Bn.)	MO				
1	CLS	\$17.54		1	1	RCAT	\$0.71	1				
2	APP	\$112.95		1	2	APPS	\$0.61	1				
3	PLTR	\$308.53		1	3	NET	\$67.26	2				
4	QBST	\$4.43		1	4	SNOW	\$74.28	3				
5	CRNC	\$0.41		1	5	TWLO	\$18.74	4				
Trend Q		Setup		Tactics		BO/BD		MCQ				
95		DOuBT						3				
YTD%		MTD%		200+/-		%FHI		ATR				
49.29%		2.25%		1.15%		-2.65%		4.24%				
\$43.91		LT		MT		ST						
TREND		Up Base+		Up Trend2		Up Base+						
Resistance		48.81		43.22		44.10						
Zone		46.29		41.58		43.43						
Momentum		33.14		36.06		42.22						
Zone		30.40		33.97		41.33						
Support		20.43		27.64		38.74						
Zone		19.17		26.82		38.41						
Net Debt (Mil.)		%Dbt/Cap		Gross Mgn%		EBITDA%		NetMgn%	FCF	Fund'l Quality		
-\$551		1.5%		76.1%		-14.7%		-17.5%		2.7%	71	
Revenue Growth				EPS Growth				Growth Quality		Returns		Return Quality
QoQ	TTM	3y	5y	QoQ	TTM	3y		ROIC	ROE	ROA		
22%	22%	26%	32%				38	-7%	-10%	-5%	81	
EV/Sales (TTM/FY1/FY2)										PE (TTM/FY1/FY2)		Value Score
TTM		FY1		FY2		TTM		FY1		FY2		
9.9		8.9		7.7				63.4		54.8		91
EPS Date		Asset Turnover		Short% Interest		Buy Back%		<div>MOTR</div> <div>CAPITAL MANAGEMENT</div> <div>STAY IN GEAR WITH THE MARKET</div>				
Estimated Aug-04-2025				2.23%		-0.32%						

JFrog Ltd. provides an end-to-end, hybrid, universal Software Supply Chain Platform. The Company's solutions include The JFrog Artifactory, JFrog Curation, JFrog Xray (Security Essentials), JFrog Advanced Security, JFrog Runtime Security, JFrog Distribution, JFrog Connect, and JFrog ML. JFrog Artifactory supports all software package technologies and can be seamlessly deployed across public clouds, multi-cloud, on-premises, private cloud, and hybrid environments. JFrog Curation understands package metadata, allowing companies to build policies around the entry or blocking of software packages into a company's repositories based on multiple factors such as age, version number, security risk, release timelines, target environments, and more. JFrog Distribution provides reliable, scalable, and secure software package distribution with enterprise-grade performance. JFrog Xray continuously scans JFrog Artifactory to secure all software packages stored in it.


www.MOTRCMR.com

Source: MOTR Capital Management & Research Inc.; Koyfin.com



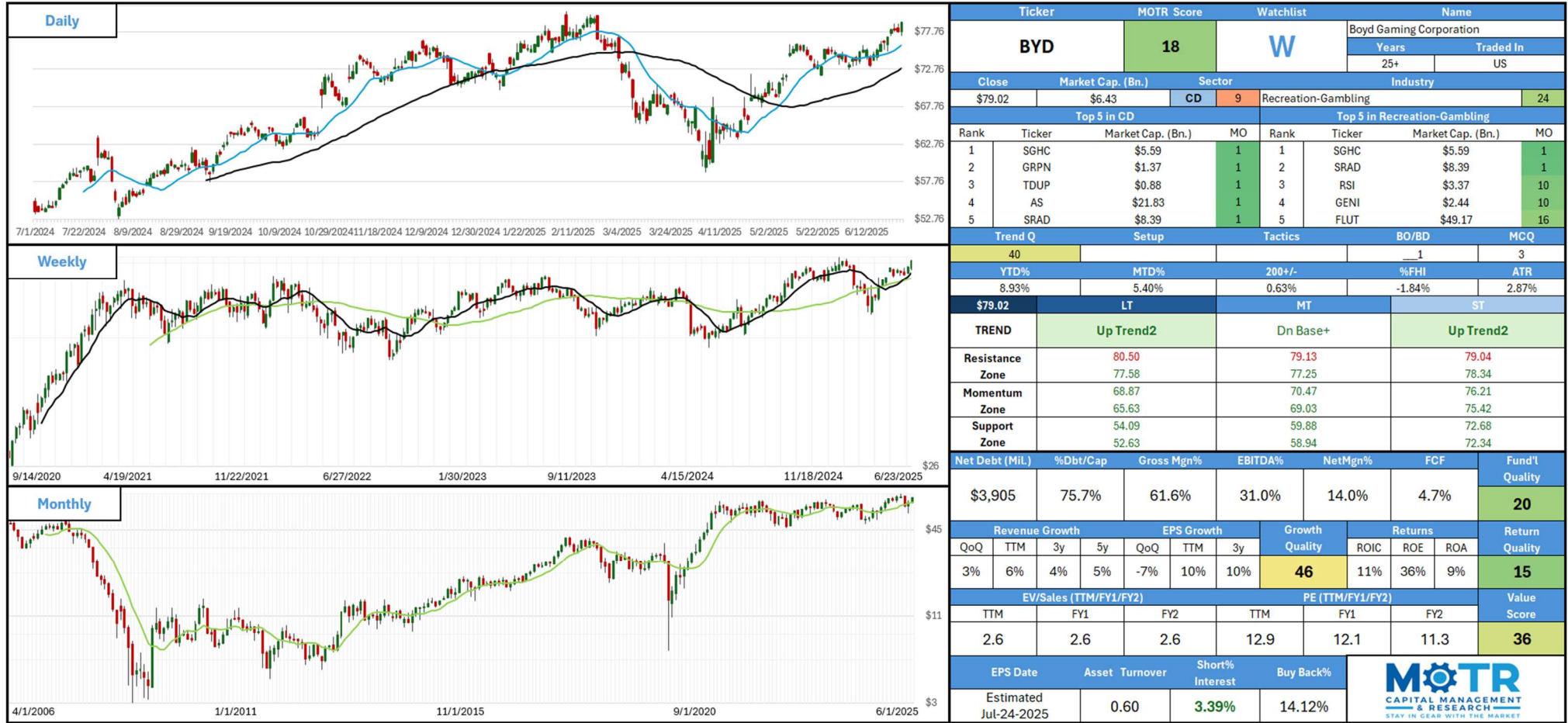


Ticker		MOTR Score		Watchlist		Name	
DIS		16		W		The Walt Disney Company	
						Years	Traded In
						25+	US
Close		Market Cap. (Bn.)		Sector		Industry	
\$122.34		\$219.94		CM	1	Media-Diversified	
Top 5 in CM				Top 5 in Media-Diversified			
Rank	Ticker	Market Cap. (Bn.)	MO	Rank	Ticker	Market Cap. (Bn.)	MO
1	ASTS	\$16.67	1	1	TKO	\$35.49	8
2	RBLX	\$71.62	1	2	SONY	\$157.44	10
3	SPOT	\$158.43	2	3	FOXA	\$24.49	11
4	TRVG	\$0.25	3	4	LBRDK	\$13.76	11
5	RDDT	\$26.39	3	5	FWONK	\$25.99	14
Trend Q		Setup		Tactics		BO/BD	
37		DDuBT				11	
YTD%		MTD%		200+/-		%FHI	
9.87%		8.23%		0.75%		-0.49%	
\$122.34		LT		MT		ST	
TREND		Up Trend1		Up Trend2		Up Trend2	
Resistance		118.63		117.82		122.94	
Zone		113.91		114.16		121.75	
Momentum		103.87		101.90		119.41	
Zone		99.30		97.14		117.82	
Support		80.36		85.74		113.28	
Zone		78.00		83.91		112.68	
Net Debt (Mil.)		%Dbt/Cap		Gross Mgn%		EBITDA%	
\$37,037		28.3%		37.1%		20.3%	
						9.5%	
						4.2%	
						Fund'l Quality	
						34	
Revenue Growth				EPS Growth			Return Quality
QoQ	TTM	3y	5y	QoQ	TTM	3y	
7%	5%	7%	4%	429%	49%	24	6%
EV/Sales (TTM/FY1/FY2)		PE (TTM/FY1/FY2)		Value Score			
TTM	FY1	FY2	TTM	FY1	FY2		
2.8	2.7	2.6	25.0	21.2	19.5		
EPS Date		Asset Turnover		Short% Interest		Buy Back%	
Estimated Aug-06-2025		0.50		0.99%		1.72%	




**MOTR**  
CAPITAL MANAGEMENT  
& RESEARCH  
STAY IN GEAR WITH THE MARKET

The Walt Disney Company is a diversified worldwide entertainment company. The Company's segments include Entertainment, Sports and Experiences. The Entertainment segment generally encompasses its non-sports focused global film and episodic content production and distribution activities. The lines of business within the Entertainment segment along with their business activities include Linear Networks, Direct-to-Consumer, and Content Sales/Licensing. The Sports segment encompasses its sports-focused global television and direct-to-consumer (DTC) video streaming content production and distribution activities. The lines of business within the Sports segment include ESPN and Star. The Experiences segment includes Parks and Experiences and Consumer Products. Parks and Experiences consists of Walt Disney World Resort in Florida, Disneyland Resort in California, Disney Cruise Line, and others. Consumer Products includes licensing of its trade names, characters, visual, literary and other IP.



Boyd Gaming Corporation is a gaming company. It operates over 28 gaming entertainment properties in 10 states, manager of a tribal casino in northern California, and owner and operator of Boyd Interactive, a B2B and B2C online casino gaming business. Its segments include Las Vegas Locals, Downtown Las Vegas, Midwest & South, and Online. The Las Vegas Locals segment consists of eight casinos in the Las Vegas metropolitan area. The Downtown Las Vegas segment consists of three properties: California Hotel and Casino, Fremont Hotel & Casino, and Main Street Station Hotel and Casino. Its Midwest & South properties consist of five land-based casinos, five dockside riverboat casinos, three racinos and four barge-based casinos that operate in nine states, predominantly in the Midwest and southern United States. The Online segment includes its online gaming operations through collaborative arrangements with third parties throughout the United States and the operations of Boyd Interactive.

## Setups, Tactics, & Triggers (Breakouts)

Long-Term Setups, Short-Term Tactics & Triggers (Breakouts)				
Timeframe	Label	Meaning	Description	
Long-Term	Setups	<b>DOuBT</b>	" <u>D</u> own and <u>OUt</u> But <u>T</u> urning" Is/was in structural bear trend, but beginning to improve	
		<b>MOAB</b>	" <u>M</u> other <u>O</u> f <u>A</u> ll <u>B</u> uys" Still in structural uptrend, but very close to long-term downtrend. If fundamentals are fine, this is a low risk spot to buy relative to potential upside if uptrend resumes.	
		<b>MOAS</b>	" <u>M</u> other <u>O</u> f <u>A</u> ll <u>S</u> ells" Still in structural downtrend, but very close to long-term uptrend. If fundamentals are poor, this is a low risk spot to sell/short relative to potential downside if downtrend resumes.	
Short-Term	Tactics	<b>PULL1</b>	"Shallow Pullback" In high momentum uptrend, but shallow pullback short-term.	
		<b>PULL2</b>	"Deep Pullback" In high momentum uptrend, but deep pullback short-term.	
		<b>SHRT</b>	"Short" Bouncing in downtrend, near resistance, not ideal spot for buy, good spot to reduce/sell/short.	
	Triggers (Breakouts)	<b>111</b>	Upside Breakouts	LT, MT, ST
		<b>11_</b>		LT,MT
		<b>1__</b>		LT
		<b>_11</b>		MT,ST
		<b>_1_</b>		MT
		<b>_1__</b>		ST
		<b>1_1</b>		LT,ST
		<b>-1-1-1</b>	Downside Breakouts	LT, MT, ST
		<b>-1-1_</b>		LT,MT
	<b>-1__</b>	LT		
<b>_1-1</b>	MT,ST			
<b>_1_</b>	MT			
<b>_1__</b>	ST			
<b>-1_-1</b>	LT,ST			
		No Breakouts		
	 <a href="http://www.motrcmr.com">www.motrcmr.com</a>			



Overall MOTR Score		Flashes "W" if on our US Watchlist	
<div> <div>Ticker</div> <div>MOTR Score</div> <div>Watchlist</div> <div>Name</div> </div>		<div> <div>Revolve Group Inc.</div> <div>Years</div> <div>Traded In</div> </div>	
RVLV		11 W	
5.7		US	
<div> <div>Close</div> <div>Market Cap. (Bn.)</div> <div>Sector</div> <div>Industry</div> </div>		<div> <div>72</div> </div>	
\$29.31		\$2.07	
CD		6	
Retail-Apparel/Shoes/Acc			
<div> <div>Top 5 in CD</div> <div>Top 5 in Retail-Apparel/Shoes/Acc</div> </div>		<div> <div>72</div> </div>	
<div> <div>Rank</div> <div>Ticker</div> <div>Market Cap. (Bn.)</div> <div>MO</div> </div>		<div> <div>Rank</div> <div>Ticker</div> <div>Market Cap. (Bn.)</div> <div>MO</div> </div>	
1 DOGZ \$0.45 1		1 ATZAF \$5.57 6	
2 EAT \$7.64 1		2 RVLV \$2.07 11	
3 CVNA \$55.77 1		3 GCO \$0.45 11	
4 SGHC \$4.18 2		4 URBN \$5.22 15	
5 REAL \$0.92 2		5 AKA \$0.19 21	
<div> <div>Trend Q</div> <div>Setup</div> <div>Tactics</div> <div>BO/BD</div> <div>MCQ</div> </div>		<div> <div>73</div> <div>DOUBT</div> <div>PULL2</div> <div>1</div> <div>4</div> </div>	
YTD%		MTD%	
-5.73%		-12.66%	
200+/-		%FHI	
118.79%		-25.94%	
ATR		5.41%	
<div> <div>\$29.31</div> <div>LT</div> <div>MT</div> <div>ST</div> </div>		<div> <div>TREND</div> <div>Up Trend1</div> <div>Up Base-</div> <div>Dn Base-</div> </div>	
Resistance Zone		39.58 40.51 34.25	
Momentum Zone		37.16 39.06 33.61	
Support Zone		25.64 33.89 31.37	
14.87 26.02 28.14			
<div> <div>Net Debt (Mil.)</div> <div>%Dbt/Cap</div> <div>Gross Mgn%</div> <div>EBITDA%</div> <div>NetMgn%</div> <div>FCF</div> <div>Fund'l Quality</div> </div>		<div> <div>15</div> </div>	
-\$210		9.2%	
52.4%		3.7%	
3.7%		0.8%	
Revenue Growth		EPS Growth	
QoQ TTM 3y 5y		QoQ TTM 3y	
10% 2% 11% 13%		257% 29% -23%	
Growth Quality		Returns	
20		ROIC ROE ROA	
5% 10% 3%		Return Quality	
18			
<div> <div>EV/Sales (TTM/FY1/FY2)</div> <div>PE (TTM/FY1/FY2)</div> <div>Value Score</div> </div>		<div> <div>68</div> </div>	
TTM FY1 FY2		TTM FY1 FY2	
1.7 1.7 1.5		51.3 47.0 36.9	
<div> <div>EPS Date</div> <div>Asset Turnover</div> <div>Short% Interest</div> <div>Buy Back%</div> </div>		<div> <div>MOTR</div> <div>CAPITAL MANAGEMENT &amp; RESEARCH</div> <div>STAY IN GEAR WITH THE MARKET</div> </div>	
Confirmed Feb-25-2025		1.63 9.20% 1.41%	

Trend levels in the LT (Long-Term), MT (Medium-Term) and ST (Short-Term) time frames.

Red if > current price,  
Green if < current price.

Industry Rank (1-100).  
177 total industries

Top 5 Stocks  
in the specific  
industry

Market Cap Quintile  
(1-5)

\*%FHI represents % off 52  
week high.

\*200+/- represents the pct.  
change in the 200 day average

4 fundamental  
scores and their  
components



## Important Disclosures

All persons using the **MOTR Capital Management & Research** website (the “Website”) expressly agree to the following disclaimers as a pre-condition to using this Website for any purpose whatsoever.

**MOTR Capital Management & Research, its employees, and its affiliates may now or in the future have positions in securities mentioned on this Website.** Our content and stock charts, which provide certain current and historical information, should not be relied upon as the sole factor in determining whether to buy, sell, or hold a stock. The charts provide certain current and historical information but are not a substitute for a comprehensive analysis of the individual stocks.

The information contained on this Website is not intended to be used as the primary basis for investment decisions, nor should it be considered as advice of professionals regarding the evaluation of any specific content. Information and opinions on this Website are provided for informational purposes only, do not constitute financial, investment, legal or tax advice, and are not a solicitation to buy or sell an interest in any investment fund, investment product, or for the provision of any investment management or advisory services. Any such offer would be made only pursuant to a relevant prospectus or other offering document (which will include the fund’s investment objectives, risks, charges, and expenses) and the relevant subscription agreement, all of which must be read in their entirety. The information on this Website has been prepared without regard to the specific investment objectives, financial situation, and needs of any particular recipient. Before making any investment decision a recipient should consult with tax, legal and wealth advisors.

The opinions of **MOTR Capital Management & Research** expressed on this Website represent its good faith views and are provided for limited purposes, are not definitive investment advice, and should not be relied upon as such. Information and opinions provided by third parties have been obtained from sources believed to be reliable, but accuracy and completeness cannot be guaranteed. Distribution, dissemination, republication, or other transfer of information contained on this Website, in whole or in part, is strictly prohibited without the express written consent of **MOTR Capital Management & Research**.

The information on this Website is provided strictly as a courtesy. All information and content on this Website is furnished “As Is” and “As Available” without additional representation or warranty of any kind, express or implied, including but not limited to implied warranty of merchantability or fitness for a particular purpose.

When you link to any web site that may be referenced herein, you are leaving this site. **MOTR Capital Management & Research**, its employees and its representatives make no representation or warranty as to the completeness or accuracy of information provided on other sites, nor is it or are they liable for any direct or indirect technical or system issues or any consequences arising out of your access to or your use of the third-party technologies, sites, information, or programs made available through this, or other, sites. When you access one of these sites, you are leaving our website and assume responsibility and risk for your use of the sites to which you are linking.